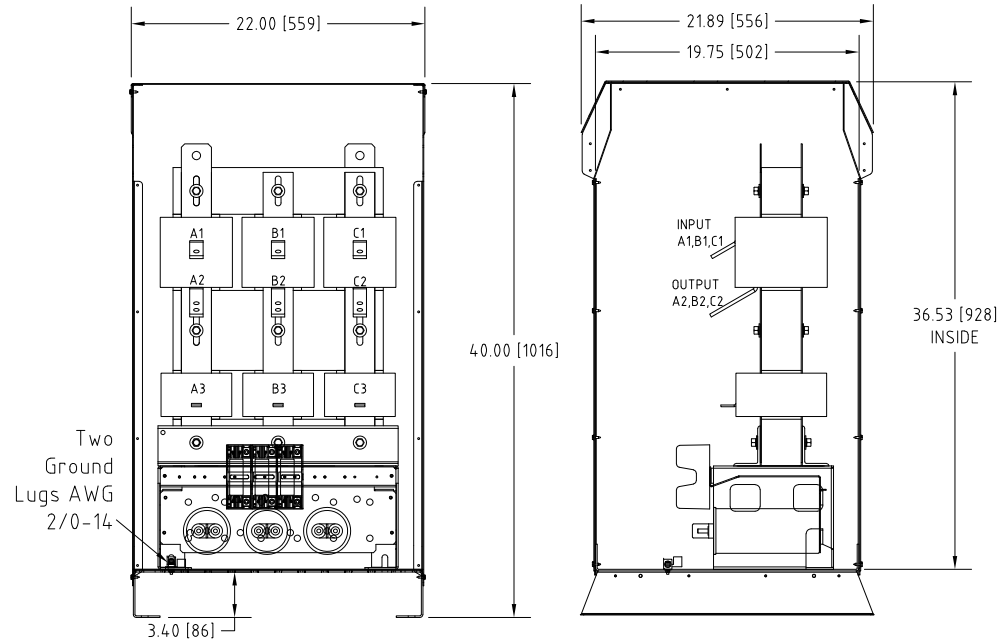
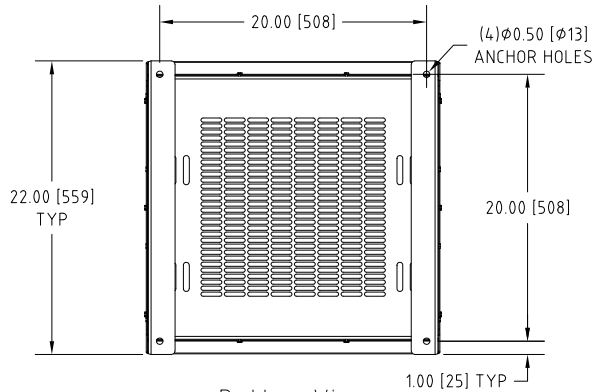


Rev. No.	Revision Note	Date	By	Checked
A18	CHANGED CAPACITORS POSITION	09-FEB-2016	CG	AH
A19	REVISED DESIGN TO 0013	12-FEB-2018	CG	AH

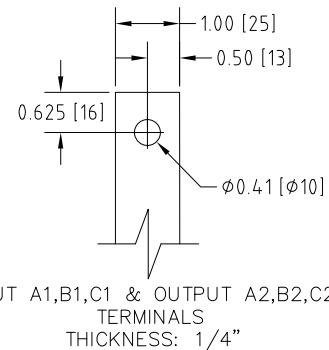


Front View

Side View

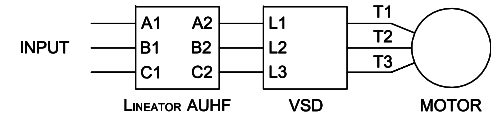


Bottom View



INPUT A1,B1,C1 & OUTPUT A2,B2,C2
TERMINALS
THICKNESS: 1/4"

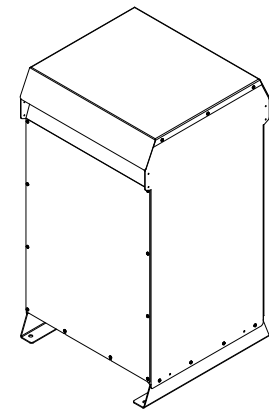
Connection Diagram



UNIT SPECIFICATIONS				INPUT	OUTPUT	APPROX. WT
HP [kW]	PHASE	VOLTS	Hz	AMPS	kW	lb [kg]
200 [150]	3	480	60	226	168	400 [182]

NOTES:

- Customer is responsible for installation to meet all national and local electrical codes and other applicable electrical safety authorities.
- Type 3R Enclosure requires only front access but minimum 6" clearance should be provided at rear for proper ventilation..



Isometric View

MIRUS International Inc.

31 Sun Pac Boulevard, Brampton, ON, Canada L6S 5P6
Tel: (905) 494-1120 Fax: (905) 494-1140 Toll Free: 1-888-TO MIRUS

Unless otherwise specified, dimensions are in inches and [mm].	Drawn By EH	Date Created 04-Jun-07	Checked by AH	Approved by - date AH-04-Jun-07	Scale NTS
The information contained herein is the sole property of MIRUS International Inc. Any form of reproduction, distribution and/or disclosure of this information, all or in part, is strictly prohibited without the express written consent of MIRUS International Inc.			Title 200 HP, 480 V, 60 Hz LINEATOR™ AUHF (Type-3R)		
Filename AUHF-200-480-60-D-E1-A19			Revision A19	Sheet 1/1	