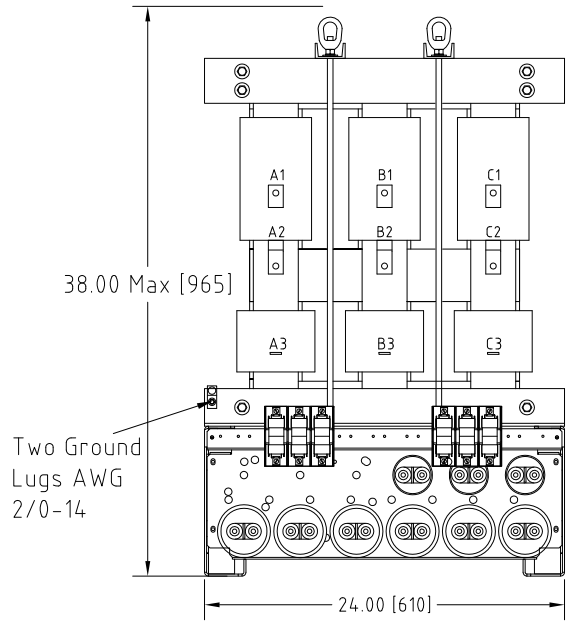
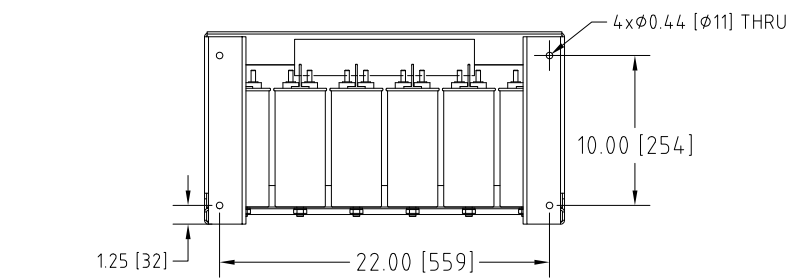


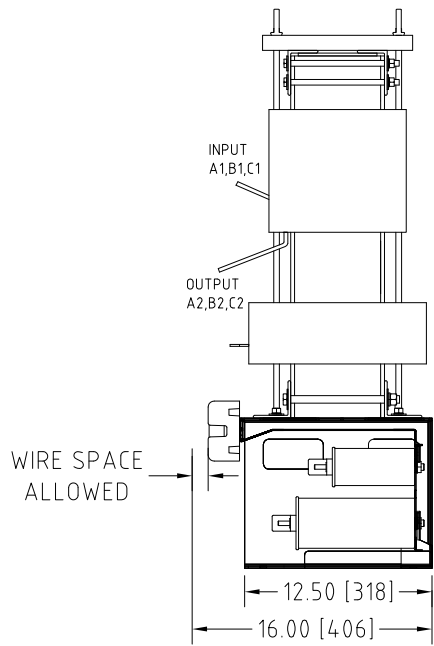
Rev. No.	Revision Note	Date	By	Checked
A14	CAPACITORS REVISED	25-NOV-14	CG	AH
A15	REVISED NAMEPLATE DATA	26-OCT-2020	CG	AH



Front View



Bottom View



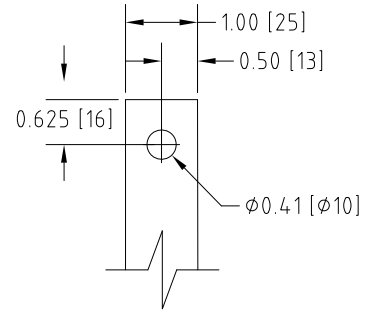
Side View

WIRE SPACE ALLOWED

Connection Diagram

UNIT SPECIFICATIONS				INPUT	OUTPUT	APPROX. WT
HP [kW]	PHASE	VOLTS	Hz	AMPS	kW	lb [kg]
300 [220]	3	600	60	270	251	595 [270]

NOTES:
 1. CUSTOMER IS RESPONSIBLE FOR INSTALLATION TO MEET ALL NATIONAL AND LOCAL ELECTRICAL CODES AND OTHER APPLICABLE ELECTRICAL SAFETY AUTHORITIES.
 2. CUSTOMER IS RESPONSIBLE FOR PROPER COOLING OF FILTER COMPONENTS. ALLOWED AMBIENT: MAXIMUM 60°C, MINIMUM -40°C. A MINIMUM CLEARANCE OF 2" MUST BE ALLOWED ON BOTH RIGHT AND LEFT SIDES. PROPER VENTILATION MUST ENSURE THAT SUPPLY AIR FLOWS THROUGH THE REACTOR COILS FROM BELOW THE UNIT.



Input A1,B1,C1 & Output A2,B2,C2
 TERMINALS
 THICKNESS: 1/4"

NOTE:
 This open style unit is not equipped with panel mount brackets. If panel mounting is desired, a suitable bracket must be provided by others.

MIRUS International Inc.		31 Sun Pac Boulevard, Brampton, ON, Canada L6S 5P6 Tel: (905) 494-1120 Fax: (905) 494-1140 Toll Free: 1-888-T0 MIRUS			
Unless otherwise specified, dimensions are in inches and [mm].	Drawn By EH	Date Created 04-Jul-07	Checked by YM	Approved by - date YM-04-Jul-07	Scale NTS
The information contained herein is the sole property of MIRUS International Inc. Any form of reproduction, distribution and/or disclosure of this information, all or in part, is strictly prohibited without the express written consent of MIRUS International Inc.		Title 300 HP, 600 V, 60 Hz LINEATOR™ AUHF (Open Style)			
		Filename AUHF-300-600-60-D-E0-A15		Revision A15	Sheet 1/1